



# Release Notes

Version 10.0

Soft Release 4.1.2013

Insight Software, LLC

PUBLISHED BY

Insight Software, LLC  
3050 Universal Blvd Ste 120  
Weston, FL 33331-3528

Copyright ©2013 Insight Software, LLC.

All rights reserved. No part of the contents of this document may be reproduced or transmitted in any form or by any means without the written permission of the publisher.

# Contents

<b>Important</b>	<b>1</b>
About These Release Notes .....	1
Upgrading to Version 10.0 .....	1
Internet Connection Required .....	1
Microsoft SQL Server .....	1
<b>Fixes &amp; Other Enhancements</b>	<b>2</b>
Orders .....	2
Setup .....	3
Inventory .....	4
Reports .....	4
Exam .....	4
Insurance .....	5

# Important

---

## About These Release Notes

This document contains a review of the new features and latest modifications for My Vision Express Version 10.0. These are all subject to change and their inclusion in these Release Notes does not guarantee that they will be part of the final release for this version. This document was last reviewed on April 10, 2013.

---

## Upgrading to Version 10.0

The upgrade to My Vision Express Version 10.0 from previous versions implies a long list of changes which, for the most part, are outlined in these Release Notes. Before you perform this upgrade, you should read this document thoroughly and understand how the changes in this new version of My Vision Express will impact your usage of the software and your practice in general.

Contact the My Vision Express support team for help during the upgrade process at 877-882-7456 (Option 3). Please schedule your upgrade during support hours (Mon. – Fri. 8:30 AM – 7:00 PM) so that you have help available if you run into any issue.

---

## Internet Connection Required

Starting with My Vision Express Version 10.0, you will need an Internet connection to run the application. The software will periodically perform a license check which would fail without Internet connectivity. Also, many of the new features coming in this version require Internet access. Including many of those designed to help you qualify as a “meaningful user” under the EHR Incentive Program for Medicare/Medicaid.

---

## Microsoft SQL Server

Version 10.0 of My Vision Express requires Microsoft SQL Server 2008 R2 or Microsoft SQL Server 2012 to be installed in your server. If you do not have this version of SQL installed please contact our support department before upgrading.

# Fixes & Other Enhancements

---

## Orders

### LEA-124-30063

Fixed freezing of My Vision Express when select the lens UPC in the lens tab of a spectacle lens order after selecting some Insurance company/plans on the order. This freezing was caused by a loop that would eventually release to allow you to continue with your order.

### OSI-916-56194

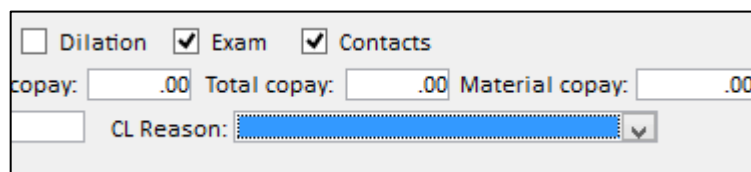
Fixed an error where the Series Grid pricing was not pulling over to order if the spectacle lens was entered in the order before the prescription.

### JSW-213-1738

Fixed a calculation error where if patient has 2 orders where order 1 has a positive patient balance and a negative insurance balance of the same dollar amount both orders would not appear in the payment allocation.

### UGP-581-52451

The CL Reason field has been re-added to a Contact Lens order to ensure claims filed will include the tag required to successfully submit the claim.



The screenshot shows a form with the following elements:

- Three checkboxes:  Dilation,  Exam,  Contacts
- Three input fields: copay:  Total copay:  Material copay:
- A dropdown menu labeled "CL Reason:" with a blue selection bar.

### SRC-446-89556

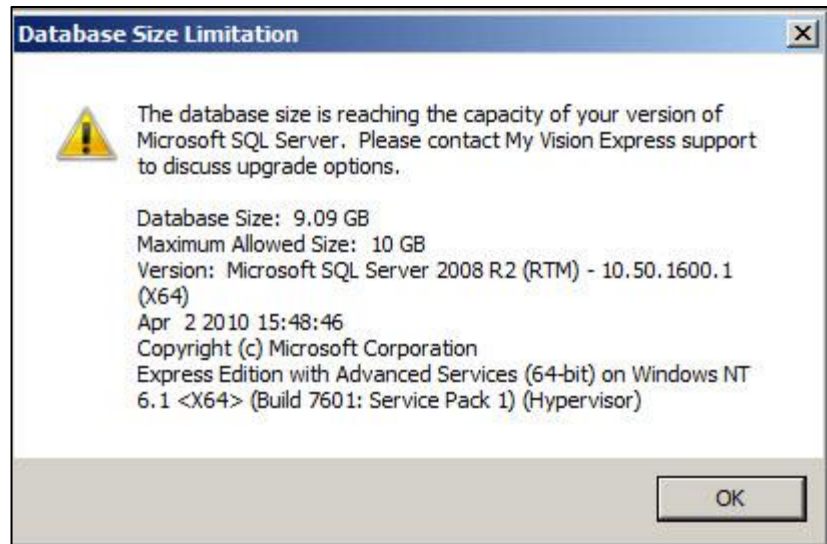
Fixed discrepancy where the commission was being added on "Free Remake" type orders.

# Setup

## QNG-464-59849

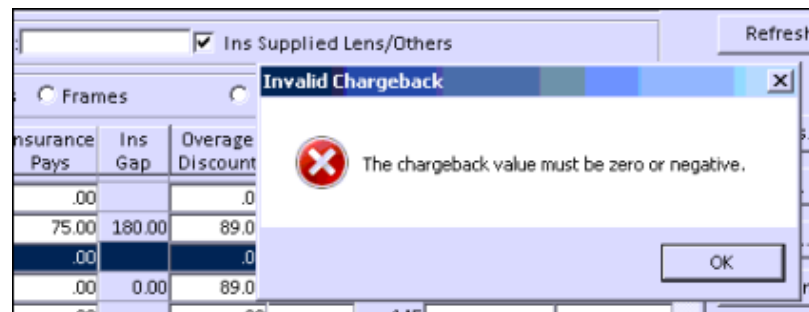
The database size limitation notification has been updated to notify the user at the login screen when you initially login to My Vision Express. This will ensure users are aware of their database size limitation of 10gb when using the SQL Express Edition which is packaged with our software.

Below is the warning displayed when the user logs into any terminal setup with My Vision Express after the database has surpassed the 9gb mark.



## GFL-863-42305

Addressed a problem where an error would appear if Services were setup in the Insurance Fee Schedule with the Ins Supplied Lens/Others | checked off restricting the setup.



---

## Inventory

### **FDF-317-11522**

Fixed error in Contact Lens inventory where the Synchronize function would not update all contact lens configurations.

---

## Reports

### **JUY-890-26949**

Frame Inventory Report – Fixed a discrepancy where the report was not taking into account orders created as “Quotes” and considering them as sales. This was causing the report to show incorrect counts.

### **XII-305-43920**

Day Sheet Report / Daily Closing – Fixed a sporadic database error that would appear when running the Day Sheet Report or Daily Closing.

---

## Exam

### **URF-255-40994**

The physician on a copy of a refractive or contact lens prescription in the exam module will reflect the physician on the current exam not the previous exam.

### **QTD-216-30807**

Fixed error that would cause notes in any note field disappearing after using the Clipboard function if the entry was not edited further.

### **JZO-270-69617**

Fixed exam locking limitations in the Referred to section of the Summary Tab, the Entrance Tab & IOP that would allow changes to be made regardless of the exam being locked.

### **AOK-943-54181**

Fixed Contact Lens filtering in the Exam module when Add power was one of the filtering options entered. This was caused by an error when the Add power was initially entered in the Contact Lens configuration at the inventory level.

---

## Insurance

### ICI-812-47830

Medicare Claims - Fixed a discrepancy where the patient address would fill the facility address in the ANSI file causing rejections by the clearinghouse. Going forward the patient's address will still show as the facility address for Medicare Claims with a POS of 12 on charges but the ANSI file will be generated with the correct address information for processing. No changes are required by the user in the program.